

Pull-Lock® For Metal Installations

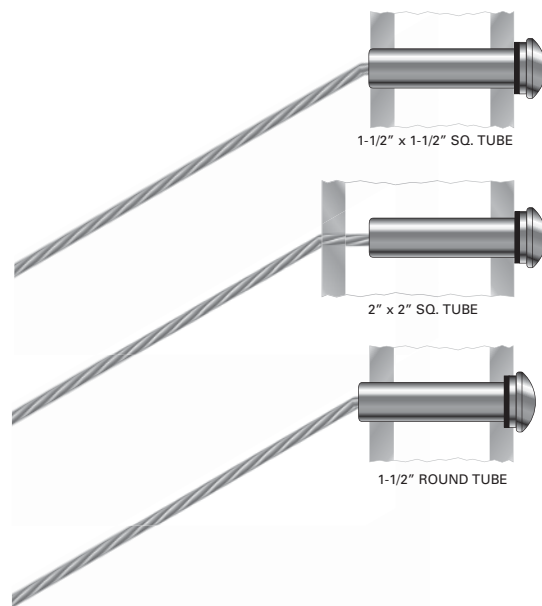


The Pull-Lock® is a concealed, swageless, non-tensioning, through-the-post-mounted fitting that is suitable for use on level or pitched runs, and is available for 1/8" and 3/16" diameter 1x19 stainless steel cable.

The Pull-Lock® must be used with a tensioning fitting on the opposite end of the run. This fitting is installed into a pre-drilled hole in the end post. Using the Pull-Lock® fitting on level or pitched runs requires enough clearance on the back side of the end post to install the fitting through the back side of the post. That amount of clearance depends on the length of Pull-Lock® chosen. This fitting is furnished with a Delrin® washer that is installed between the shoulder of the fitting and the end post to protect the surface of the finish of the end post as tension is applied. The cable attaches to the fitting via our Push-Lock® locking wedge system which requires no special tools.

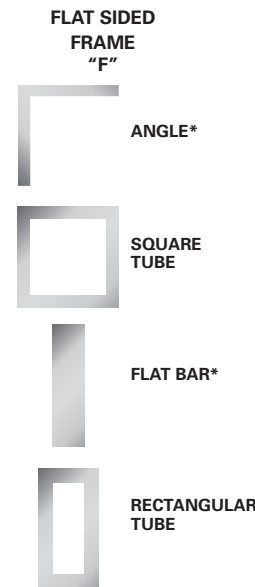
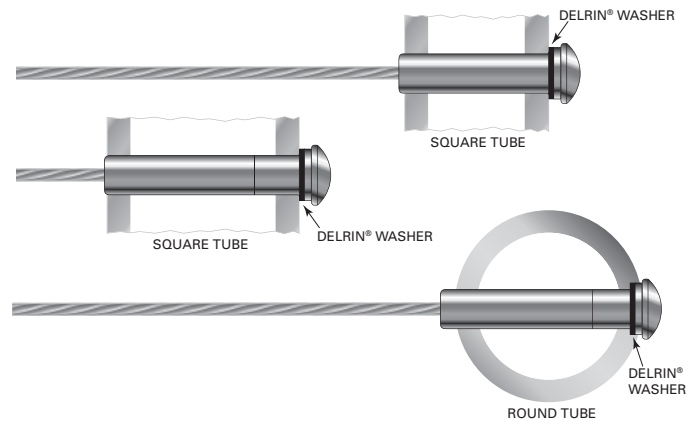
This fitting is very much like the Push-Lock®, except the cable passes through the Pull-Lock®, meaning you can just cut the excess cable where it exits the fitting – no need to measure the cable before cutting. This feature eliminates the need for taking accurate cable length measurements (as is required when using a Push-Lock® fitting). For that reason, it is the more popular of the two.

The Pull-Lock® can be used on a pitched run in a hole drilled horizontally through the end post. The cable will exit the fitting at an angle. To properly use this fitting on a pitch, it is recommended that you choose a Pull-Lock® that is the same length as the cross section of your end post.



PULL-LOCK® FITTINGS FOR USE ON METAL FRAME WITH A PITCH

SQ. OR RECT. TUBE	ROUND TUBE	PIPE	1/8" cable PART NO.	3/16" cable PART NO.
1-1/2"	1-1/2"	1-1/4"	PUL-4-12	PUL-6-12
2"	2"	1-1/2"	PUL-4-2.030	PUL-6-2.030
2-3/8"	N/A	2"	PUL-4-2.375	PUL-6-2.375
3"	3"	N/A	PUL-4-3.030	PUL-6-3.030

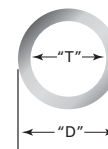


* Pull-Lock® fittings cannot be used with angle shapes or flat bar in pitch applications unless the post hole is drilled at the angle of the stair rake and a beveled washer is used.

ROUND TUBE FRAME "R"

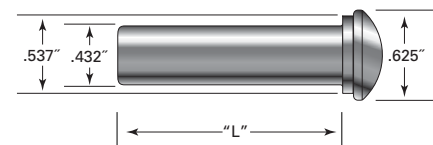


PIPE FRAME "P"



"T" = Theor. I.D. (Pipe Size)
"D" = Outside diameter

SIZE	"T"	"D"
1-1/4"	1.25"	1.66"
1-1/2"	1.50"	1.91"
2"	2.00"	2.375"



METAL FRAMING OPTIONS FOR PULL-LOCK® FITTINGS

FRAME "F"	FRAME "R"	FRAME "P"	1/8" cable PART NO.	3/16" cable PART NO.	"L" LENGTH
1-1/2"	1-1/2"	1-1/4"	PUL-4-12	PUL-6-12	1.562"
N/A	N/A	1-1/2"†	PUL-4-1.810	PUL-6-1.810	1.810"
2"	2"	N/A	PUL-4-2.030	PUL-6-2.030	2.030"
N/A	N/A	2"†	PUL-4-2.300	PUL-6-2.300	2.300"
2-3/8"	2-3/8"	N/A	PUL-4-2.375	PUL-6-2.375	2.375"
3"	3"	N/A	PUL-4-3.030	PUL-6-3.030	3.030"
2-1/2"	2-1/2"	2-1/2"	PUL-4-2.530	PUL-6-2.530	2.530"
3-1/2"	3-1/2"	3"	PUL-4-3.030	PUL-6-3.030	3.030"

† Will protrude from cable side of post +/- .125".

Pull-Lock® For Wood Installations

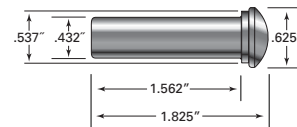
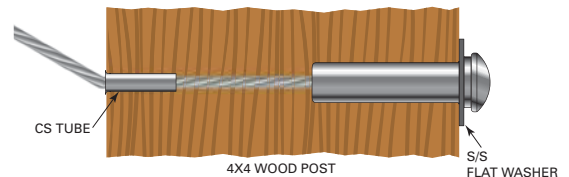
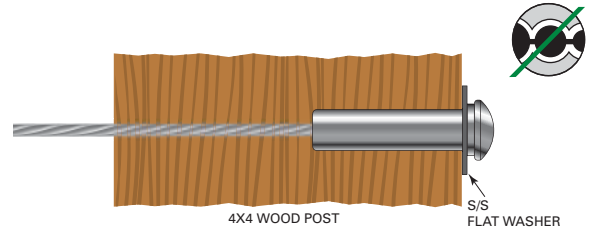


The Pull-Lock® is a concealed, swageless, non-tensioning, through-the-post-mounted fitting that is suitable for use on level or pitched runs, and is available for 1/8" and 3/16" diameter 1x19 stainless steel cable.

The Pull-Lock® must be used with a tensioning fitting on the opposite end of the run. This fitting is installed into a pre-drilled hole in the end post. Using the Pull-Lock® fitting on level or pitched runs requires that a minimum of 1-1/2" of clearance exists on the back side of the end post (to install the fitting and pull the cable through). It is also recommended that a stainless steel flat washer be installed between the shoulder of the fitting and the mating surface of the wood post. The cable attaches to the fitting via our Push-Lock® locking wedge system which requires no special tools.

You can use this fitting on a pitched application, using the same horizontally drilled method for 4x4 wood posts, by installing a post protector tube into the face of the post where the cable exits at an angle (the post protector tube protects the face of the post from abrasion and furrowing as the cable is tensioned). The post protector tube is sold separately.

This fitting is very much like the Push-Lock®, except the cable passes through the Pull-Lock®, meaning you can just cut the excess cable where it exits the fitting – no need to measure the cable before cutting. For that reason, it is the more popular of the two.



CABLE DIA.	PART NO.
1/8"	PUL-4-12
3/16"	PUL-6-12

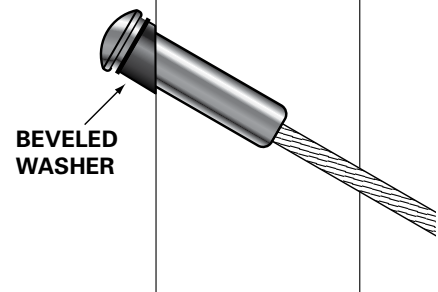
Pull-Lock® Installation Accessories

Use Pull-Lock® Fittings On Stairs With Special Beveled Washers.

Special stainless steel beveled washers let you use Pull-Lock® fittings on stairs and severe pitches with flat-sided metal frames. Not offered for pipe or round tubing.

TYPE 316 STAINLESS STEEL BEVELED WASHERS

FOR PITCH OF	ORDER PART NO.
30° - 33°	BW32-6
34° - 36°	BW35-6
37° - 39°	BW38-6



Convenient Cutting Tool

To cut the cable flush with the end of the Pull-Lock® fitting, a 4-inch right angle grinder with a cut-off wheel is ideal.

For those who do not have that type of hand tool, a cutting tool for use with a hand drill is available.

Order Part # CUT-OFF KIT

